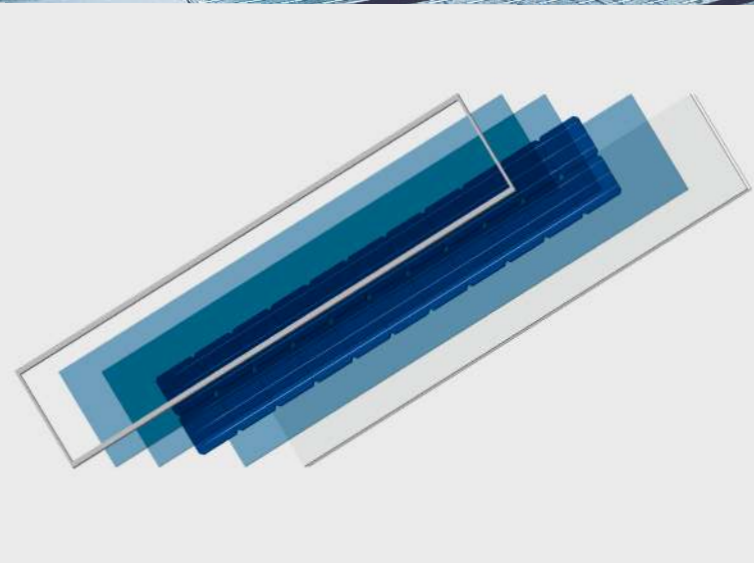


Technical Specifications

# Solarstone 105 W Solar Tile Modules

Simple, aesthetic, lightweight  
and cost-effective.

Durable building-integrated  
rooftop solar modules replacing  
traditional roofing materials.

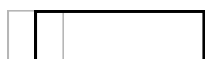


## Application

- New-builds & renovation projects
- Residential and public buildings
- Carports
- Facades
- Canopies and ancillary structures
- Historic buildings where on-roof solutions are not permitted

## Advantages

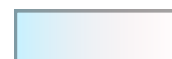
- Easy-to-mount
- Aesthetically attractive
- Weather-proof
- No expensive fittings required
- High static load rating
- 10-year warranty for defects
- 25-year warranty for output
- Compatibility with extensive selection of concrete/clay tiles



Ample tile  
compatibility

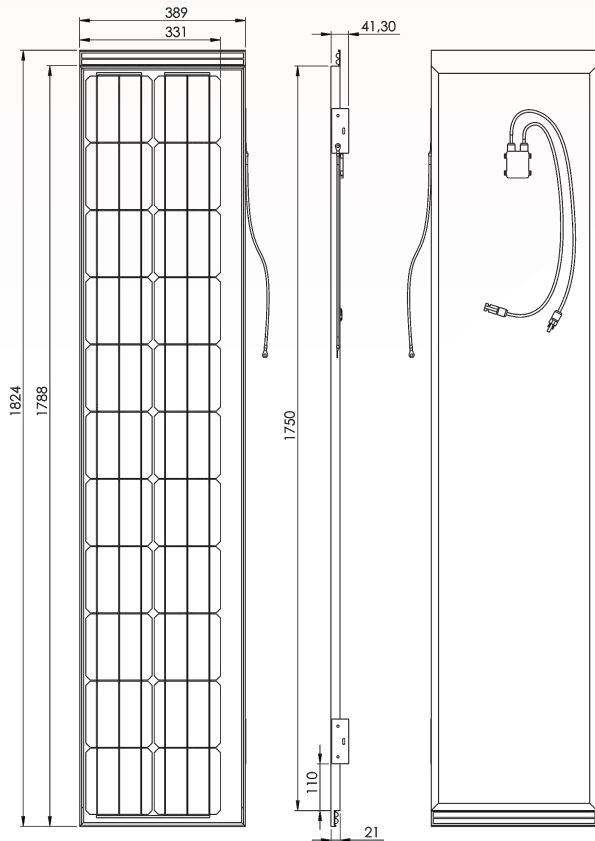
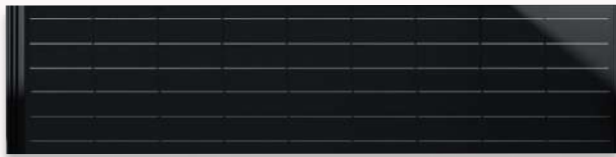


Easy installation



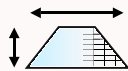
Aesthetics

## Drawings



## Calculator

Designed for BIPV



Online tool helps automate layout generation and facilitates dimensioning of utility patented Solarstone PV systems. Ask sales representative for access.

[solarstone.ee/en/calculator](https://solarstone.ee/en/calculator)

## Mechanical Specifications

Manufacturer	Solarstone
Model name	S105B30
Cell type	Monocrystalline, 156 x 156mm
Number of cells	22
Weight (kg)	8
Junction box	1 diode. IP65
Dimensions (mm)	1824 x 389 x 22
Dimensions (mm, installed)	1787 x 331... 370 x 22

## Electrical Specifications

Maximum power rating (Pmax)	105
Tolerance of max power rating	+3/-3%
Power temperature coef. (°C)	-0.414 %
Open circuit voltage (Voc)	14,12
Short circuit current (Isc)	8,86
Maximum power voltage (Vmp)	12,41
Maximum power current (Imp)	8,77
Maximum system voltage (V)	600
Fuse rating (A)	12
Static load test passed (kg/m <sup>2</sup> )	500
Module efficiency	18,5%
Output terminal	MC4
Fire rating	Class C

## Materials & Tests

100% Recyclable



- Coated black aluminum frame
- Monocrystalline silicone cells
- Prismatic 3,2mm glass
- Flash testing to ensure rated level of output
- Lead-free solder protects health and the environment
- IEC 61215 & 61730 renewal
- Broof (t2)
- Utility-patented solution (EPO)

