



**SOLARSTONE**

## FULL ROOF PV SYSTEMS WITH CLICK-ON FRAMING SPECIFICATIONS

DURABLE  
BUILDING-INTERGRATED  
ROOFTOP SOLAR PANELS  
REPLACING TRADITIONAL ROOFING

## CLICK - ON KIT

Standard size PV panels can be instantly converted waterproof roofing material with Solarstone Click-on framing.



## ADVANTAGES

*Full roof PV system for portrait & landscape installations*

*Inactive dummy modules for roof perimeter & obstacles*

*Frame compatibility with 99% of Tier 1 PV panels*

*Onsite assembly & few lightweight components*

## FIELD OF APPLCIATION

*Residential new-builds and renovation projects*

*Production facilities*

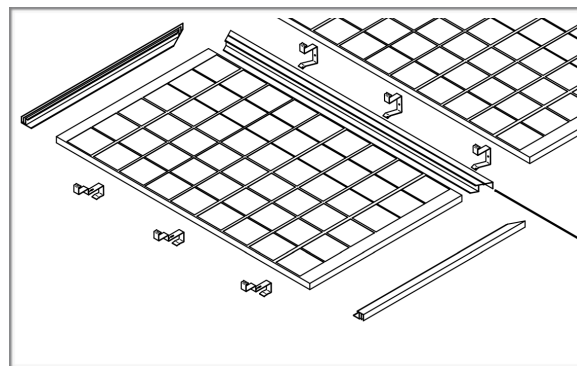
*Ancillary buildings*

*Apartment buildings*

*Public buildings*

*All pitched roofs with slope over 12°*

Technical



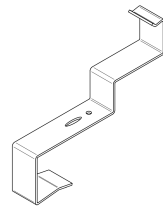
# COMPONENTS

## SPECIFICATIONS

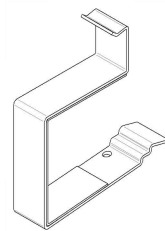
Utility patented system

Component list

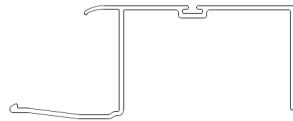
- 3 profiles
- 4 starter 1st row clamps
- 3 regular clamps
- 3 top row clamps
- Custom metal flashings



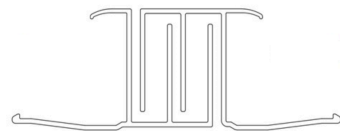
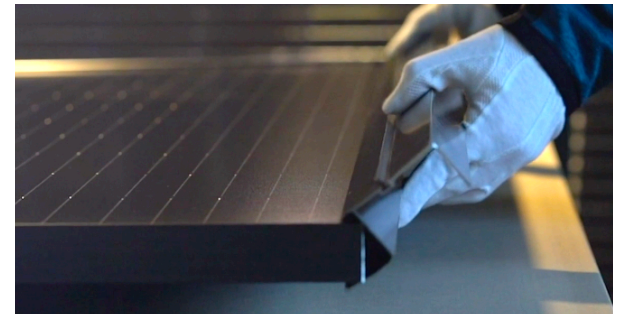
STARTER CLAMP



REGULAR CLAMP



TOP PROFILE



LEFT & RIGHT PROFILES



## TESTS & CERTIFICATION

## MATERIALS USED

## COMPATIBILITY

Main Office & Factory  
Tallinna tn 58  
Viljandi  
ESTONIA  
[sales@solarstone.ee](mailto:sales@solarstone.ee)

SGLARSTONE

### FIRE, WIND, RAIN

Climate and aging tests performed  
12 year manufacturer warranty  
IEC 61215/61730  
Roof tests are being performed



### 100 % RECYCLABLE

Painted and anodized aluminium profiles and dummies  
Stainless steel painted clamps  
No waste in production line  
No waste at the end of the product life



### TIER 1 PLAYERS

See [solarstone.ee/calculator](http://solarstone.ee/calculator) for detailed compatibility with different 60 cell Series provided by Tier 1 module makers

